

WAL Three Stage Horizontal Liquid Filter Separator

The 3L Filters™ WAL Series liquid filter separators provide water coalescing and filtration of hydrocarbon fuels. The WAL is a three-stage horizontal liquid filter separator. The first stage removes particulate and coalesces the water contaminant while the second stage separates water droplets from the fuel. The third stage is an extra safeguard to absorb any remaining water.

Applications

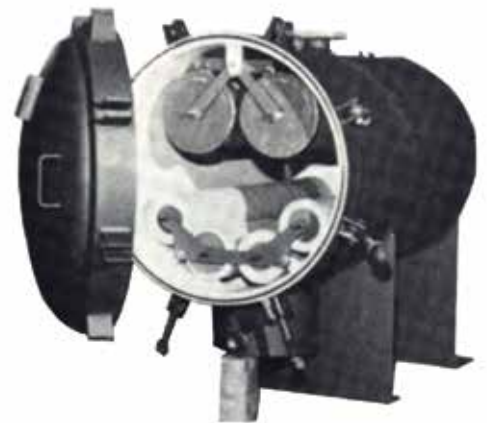
Water coalescing and filtration of hydrocarbon fuels, such as jet fuel, kerosene, diesel, gasoline and similar liquids where greater efficiency of water removal is required, such as in jet fuel refuelling cabinets.

Standard Features

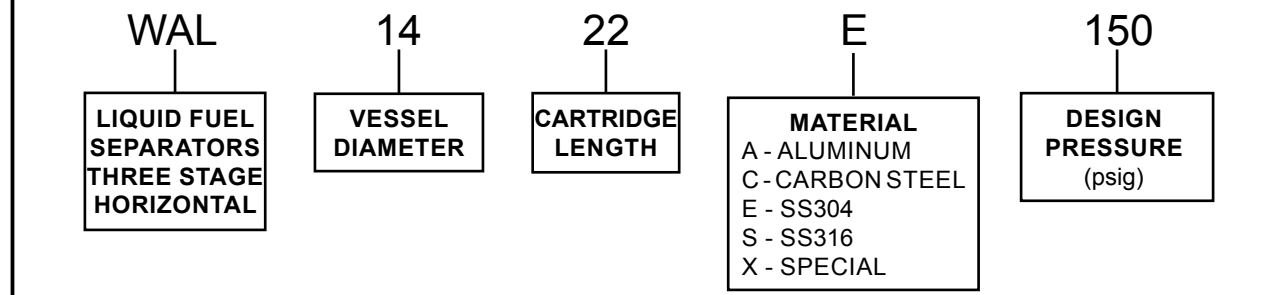
- designed to ASME Section VIII Div.1 & 2
- 150 psig standard design pressure
- -20°F to 150°F (-29°C to 66°C) standard design temperature
- 150 lb ANSI RF flanged inlet/outlet
- 3000 lb NPT couplings for vent, drain and pressure gauge connections
- carbon steel housing material
- leg supports for housings under 12" (305 mm) diameter
- saddle supports for housings 12" (305 mm) diameter and over
- quick access for replacement of cartridges
- standard Swing Bolt closure with O-ring seal
- external primer finish for carbon steel housing
- internal epoxy coating

Options & Accessories

- custom design pressures to 3000 psig
- custom flange rating
- custom housing materials
- optional closure: Thru-Bolt
- O-ring closure seal in Buna or Viton®
- electropolishing of stainless steel housings
- passivation of stainless steel housings
- paint or coating to customer specification
- sump heater
- additional nozzles as needed
- air eliminators
- valves
- safety relief valves
- automatic water dump valve
- pressure gauges
- liquid level gauges
- working platform



Model Coding



WAL

Liquid Filter Separators (Three Stage Horizontal)

Fig.	Model No.	Coalescer Elements		Separator Elements		Fuse Elements		A Vessel OD in (mm)	B1 in (mm)	B2 in (mm)	C in (mm)	D in (mm)	E in (mm)	G in (mm)	H1 in (mm)	H2 in (mm)	Inlet/ Outlet (RF)	Vent Safety Drains (NPT)	Press. Gauge (NPT)	GPM (US)	Weight lbs (kg)
		Qty	Lg in (mm)	Qty	Lg in (mm)	Qty	Lg in (mm)														
1	WAL1422E150	1	22	1	13	5	10	14 (356)	8.125 (206)	25.125 (638)	33 (838)	37 (940)	55 (1397)	37.500 (953)	9 (229)	18.0 (457)	2"	3/4"	1/2"	50	390 (177)
1	WAL1622E150	2	22	1	23	5	20	16 (406)	10.000 (254)	23.375 (594)	34 (864)	38 (965)	57 (1448)	36.375 (924)	13 (330)	16.0 (406)	4"	3/4"	1/2"	100	435 (197)
1	WAL1633E150	2	33	1	33	5	30	16 (406)	10.000 (254)	23.375 (594)	44 (1118)	48 (1219)	77 (1956)	36.375 (924)	13 (330)	27.0 (686)	4"	3/4"	1/2"	150	475 (215)
1	WAL2028E150	3	28	2	23	10	20	20 (508)	12.500 (318)	27.500 (699)	40 (1016)	44 (1118)	68 (1727)	46.750 (1187)	18 (457)	22.0 (559)	4"	3/4"	1/2"	200	600 (272)
1	WAL2044E150	3	44	2	33	10	30	20 (508)	12.500 (318)	27.500 (699)	56 (1422)	60 (1524)	100 (2540)	46.750 (1187)	18 (457)	30.0 (762)	4"	3/4"	1/2"	300	750 (340)
1	WAL2444E150	4	44	3	33	15	30	24 (610)	14.625 (371)	30.750 (781)	56 (1422)	60 (1524)	100 (2540)	54.000 (1372)	20 (508)	30.0 (762)	6"	3/4"	1/2"	450	900 (408)
1	WAL2844E150	5	44	4	33	20	30	28 (711)	16.750 (425)	34.250 (870)	49 (1245)	61 (1549)	93 (2362)	55.750 (1416)	22 (559)	22.5 (572)	6"	3/4"	1/2"	600	1100 (499)
1	WAL3056E150	6	56	5	33	25	30	30 (762)	18.000 (457)	36.000 (914)	68 (1727)	80.5 (2045)	124 (3150)	63.500 (1613)	24 (610)	30.0 (762)	6"	3/4"	1/2"	750	2000 (907)

Note:

Dimension 'E' is the minimum clearance required for cartridge removal.
 Drawings for reference only. Certified drawings will be supplied after receipt of order.
 Flow rates based on kerosene.

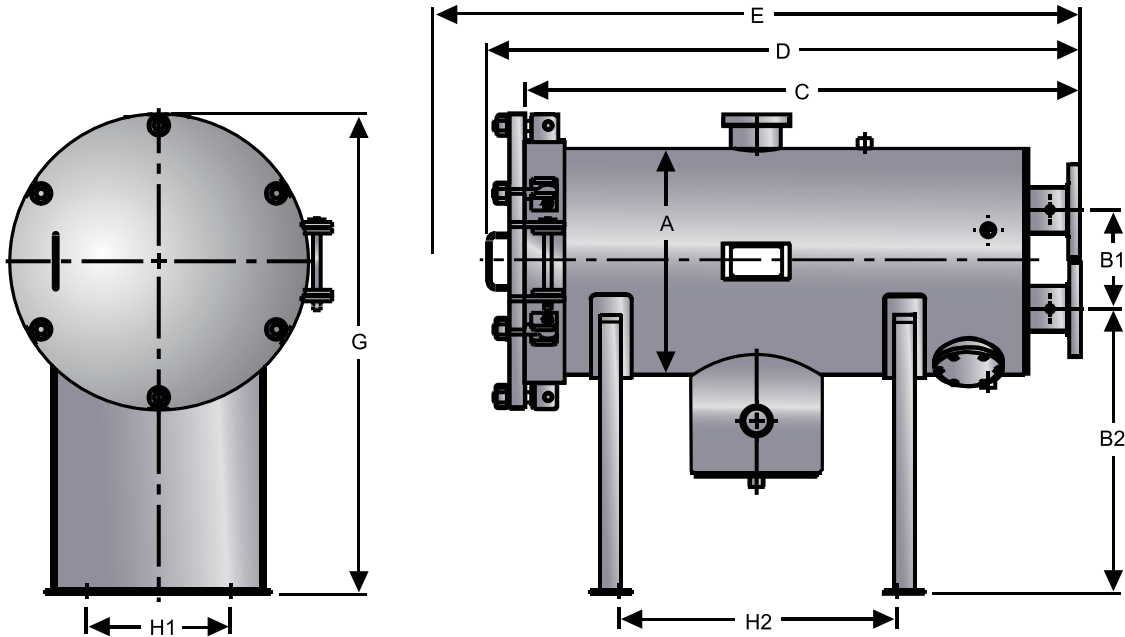


Figure 1